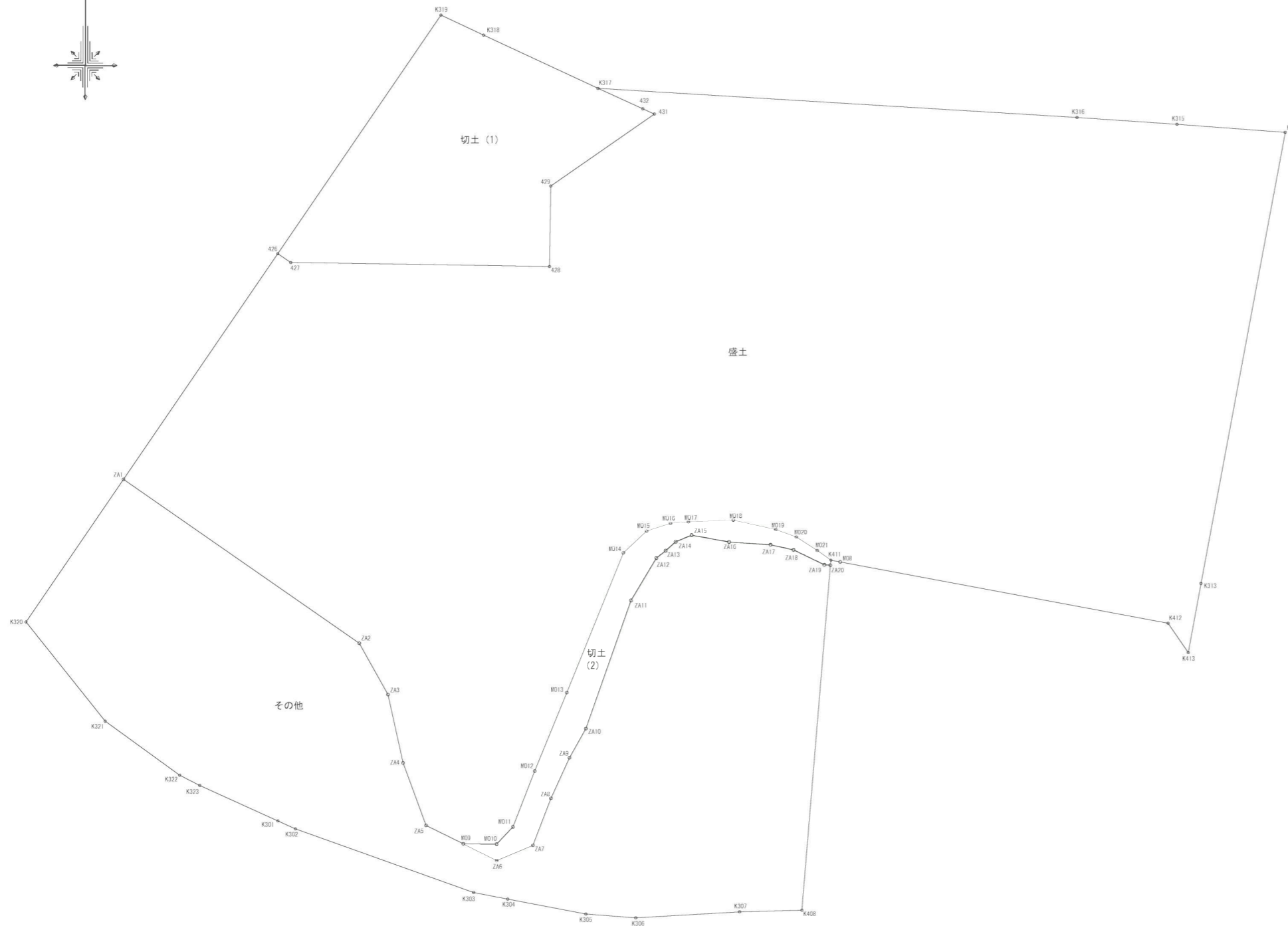


資料2-1 簡易測量図



| 測点名  | X座標                        | Y座標      |
|------|----------------------------|----------|
| ZAI  | 110.908                    | -254.432 |
| ZAI2 | 78.317                     | -157.498 |
| ZAI3 | 68.119                     | -151.793 |
| ZAI4 | 54.540                     | -148.855 |
| ZAI5 | 42.078                     | -144.221 |
| K309 | 38.456                     | -136.799 |
| K310 | 38.395                     | -135.152 |
| K311 | 41.854                     | -125.954 |
| K312 | 52.935                     | -122.650 |
| K313 | 68.515                     | -116.215 |
| K314 | 96.299                     | -104.943 |
| K315 | 100.588                    | -100.312 |
| K316 | 102.117                    | -96.577  |
| K317 | 102.422                    | -92.014  |
| K318 | 102.739                    | -83.079  |
| K319 | 100.899                    | -74.673  |
| K320 | 99.417                     | -70.573  |
| K321 | 96.756                     | -56.392  |
| K411 | 94.835                     | -53.702  |
| K38  | 94.485                     | -51.829  |
| K412 | 82.297                     | -3.463   |
| K413 | 76.462                     | 7.413    |
| K313 | 90.230                     | 9.948    |
| K314 | 179.951                    | 26.712   |
| K315 | 181.533                    | 15.193   |
| K316 | 182.899                    | -14.716  |
| K317 | 188.679                    | -110.034 |
| 432  | 184.634                    | -101.107 |
| 431  | 183.691                    | -98.895  |
| 429  | 169.299                    | -119.422 |
| 428  | 153.261                    | -119.167 |
| 427  | 154.050                    | -171.181 |
| 426  | 156.800                    | -173.720 |
| 面積   | 37720.984[m <sup>2</sup> ] |          |
| 地積   | 18860.04[m <sup>2</sup> ]  |          |

| 測点名  | X座標                      | Y座標      |
|------|--------------------------|----------|
| 426  | 156.800                  | -173.720 |
| 427  | 154.050                  | -171.181 |
| 428  | 153.261                  | -119.167 |
| 429  | 169.299                  | -119.422 |
| 431  | 183.691                  | -98.895  |
| 432  | 184.634                  | -101.107 |
| K317 | 188.679                  | -110.034 |
| K318 | 199.272                  | -132.776 |
| K319 | 203.250                  | -141.288 |
| 面積   | 4101.381384              |          |
| 地積   | 2550.69[m <sup>2</sup> ] |          |

| 測点名   | X座標                     | Y座標      |
|-------|-------------------------|----------|
| K309  | 38.456                  | -136.799 |
| K310  | 38.395                  | -135.152 |
| K311  | 41.854                  | -125.954 |
| K312  | 52.935                  | -122.650 |
| K313  | 68.515                  | -116.215 |
| K314  | 96.299                  | -104.943 |
| K315  | 100.588                 | -100.312 |
| K316  | 102.117                 | -96.577  |
| K317  | 102.422                 | -92.014  |
| K318  | 102.739                 | -83.079  |
| K319  | 100.899                 | -74.673  |
| K320  | 99.417                  | -70.573  |
| K321  | 96.756                  | -56.392  |
| K411  | 94.835                  | -53.702  |
| ZAI20 | 93.820                  | -51.786  |
| ZAI19 | 93.920                  | -54.989  |
| ZAI18 | 96.882                  | -71.181  |
| ZAI17 | 97.894                  | -76.092  |
| ZAI16 | 98.419                  | -83.931  |
| ZAI15 | 99.805                  | -91.372  |
| ZAI14 | 98.499                  | -94.544  |
| ZAI13 | 96.707                  | -96.557  |
| ZAI12 | 96.232                  | -98.420  |
| ZAI11 | 86.816                  | -103.457 |
| ZAI10 | 61.364                  | -112.410 |
| ZAI9  | 55.573                  | -116.078 |
| ZAI8  | 47.495                  | -119.375 |
| ZAI7  | 38.168                  | -122.965 |
| ZAI6  | 36.119                  | -130.166 |
| 面積    | 1010.62368              |          |
| 地積    | 805.326840              |          |
| 地積    | 805.32[m <sup>2</sup> ] |          |

| 測点名   | X座標                      | Y座標      |
|-------|--------------------------|----------|
| ZAI   | 110.908                  | -254.432 |
| ZAI2  | 78.317                   | -157.498 |
| ZAI3  | 68.119                   | -151.793 |
| ZAI4  | 54.540                   | -148.855 |
| ZAI5  | 42.078                   | -144.221 |
| K309  | 38.456                   | -136.799 |
| ZAI6  | 35.135                   | -130.150 |
| ZAI7  | 38.168                   | -122.965 |
| ZAI8  | 47.495                   | -119.375 |
| ZAI9  | 55.573                   | -116.078 |
| ZAI10 | 61.364                   | -112.410 |
| ZAI11 | 86.816                   | -103.457 |
| ZAI12 | 96.232                   | -98.420  |
| ZAI13 | 96.707                   | -96.557  |
| ZAI14 | 98.499                   | -94.544  |
| ZAI15 | 99.805                   | -91.372  |
| ZAI16 | 98.419                   | -83.931  |
| ZAI17 | 97.894                   | -76.092  |
| ZAI18 | 96.882                   | -71.181  |
| ZAI19 | 93.920                   | -54.989  |
| ZAI20 | 93.820                   | -51.786  |
| K307  | 24.920                   | -81.839  |
| K306  | 23.721                   | -102.591 |
| K305  | 24.476                   | -112.417 |
| K304  | 27.443                   | -127.987 |
| K303  | 38.774                   | -136.767 |
| K302  | 41.410                   | -170.214 |
| K301  | 42.997                   | -173.688 |
| K300  | 50.054                   | -189.294 |
| K299  | 52.096                   | -191.217 |
| K298  | 62.833                   | -228.099 |
| K320  | 82.576                   | -223.815 |
| 面積    | 13363.72096              |          |
| 地積    | 6681.805080              |          |
| 地積    | 6681.80[m <sup>2</sup> ] |          |

|      |                |
|------|----------------|
| 年度   | 平成 19 年度       |
| 工事名  | 前平墓地拡張造成計画委託業務 |
| 工事場所 | 美濃加茂市蜂屋町中蜂屋地内  |
| 図面   | 丈量図(切土 盛土)     |
| 縮尺   | 1/500          |
| 設計者  |                |