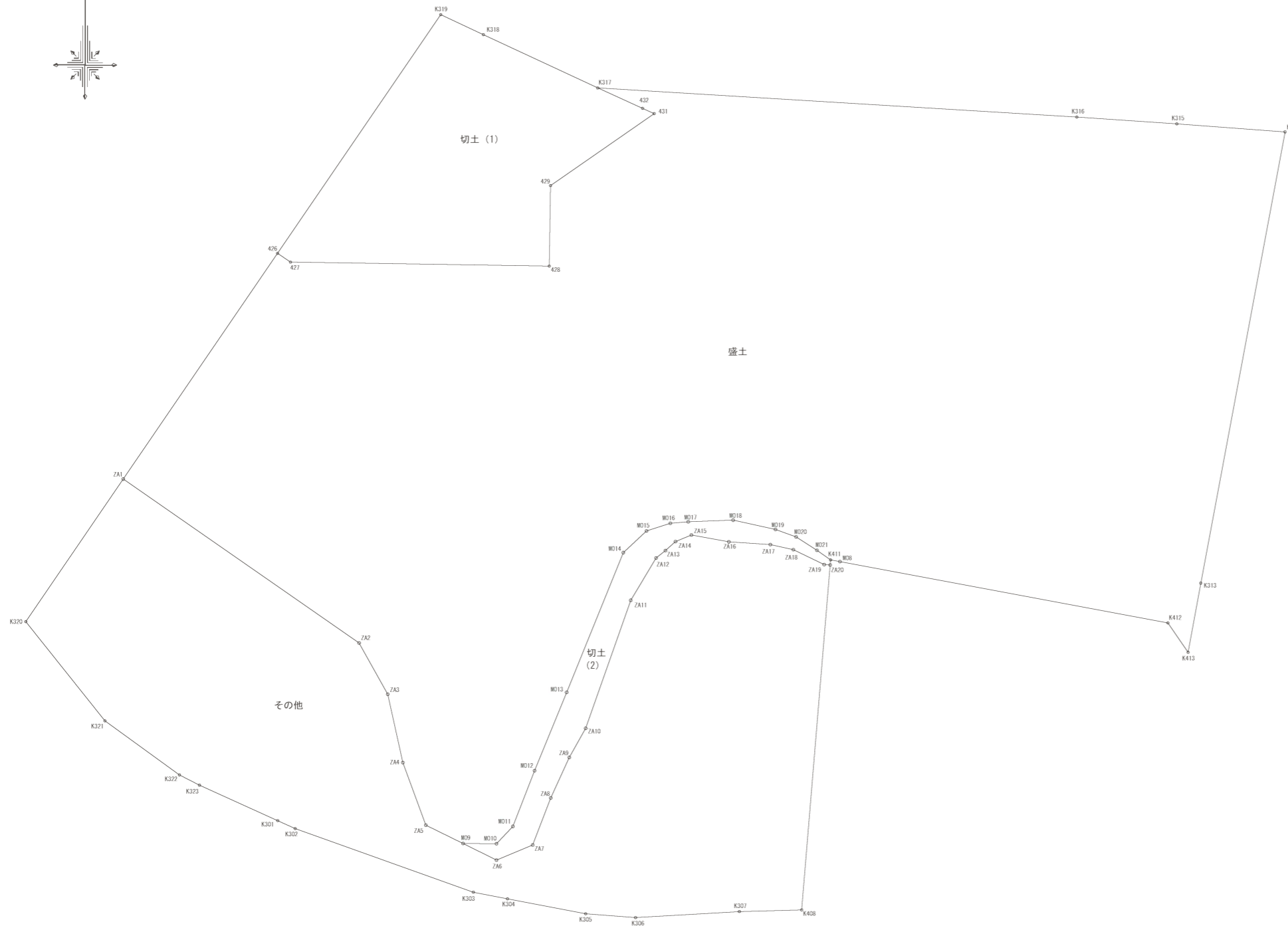


資料2 簡易測量図



盛土		
測点名	X 座標	Y 座標
ZA1	110.908	-204.432
ZA2	78.317	-157.498
ZA3	68.119	-151.793
ZA4	94.540	-148.806
ZA5	42.078	-144.221
MO9	38.456	-136.799
MO10	38.395	-130.152
MO11	41.854	-126.904
MO12	82.935	-122.606
MO13	68.515	-116.215
MO14	96.299	-104.943
MO15	100.888	-100.312
MO16	102.117	-95.577
MO17	102.422	-92.014
MO18	102.739	-83.079
MO19	100.899	-74.673
MO20	99.417	-70.573
MO21	96.756	-66.392
K411	94.835	-63.702
MO8	94.485	-61.879
K412	82.297	-5.463
K413	76.462	7.413
K313	90.230	9.948
K314	179.951	26.712
K315	181.533	5.193
K316	182.899	-14.716
K317	188.679	-110.034
432	184.634	-101.107
431	183.591	-98.806
429	169.259	-119.422
428	153.261	-119.667
427	184.050	-171.161
426	156.800	-173.720
面積	37720.969133	
座標	188660.4949665	
座標	18860.49	nf

切土 (1)		
測点名	X 座標	Y 座標
426	156.800	-173.720
427	184.050	-171.161
428	153.261	-119.667
429	169.259	-119.422
431	183.591	-98.806
432	184.634	-101.107
K317	188.679	-110.034
K318	199.272	-132.775
K319	203.250	-141.258
面積	4101.382384	
座標	20560.6918920	
座標	2050.69	nf

切土 (2)		
測点名	X 座標	Y 座標
MO9	38.456	-136.799
MO10	38.395	-130.152
MO11	41.854	-126.904
MO12	82.935	-122.606
MO13	68.515	-116.215
MO14	96.299	-104.943
MO15	100.888	-100.312
MO16	102.117	-95.577
MO17	102.422	-92.014
MO18	102.739	-83.079
MO19	100.899	-74.673
MO20	99.417	-70.573
MO21	96.756	-66.392
K411	94.835	-63.702
ZA20	93.820	-63.786
ZA19	93.920	-64.989
ZA18	96.882	-71.101
ZA17	97.894	-73.692
ZA16	98.419	-83.933
ZA15	99.805	-91.372
ZA14	98.499	-94.544
ZA13	96.707	-96.557
ZA12	96.232	-98.430
ZA11	96.816	-103.457
ZA10	61.364	-112.410
ZA9	55.573	-115.678
ZA8	47.495	-119.375
ZA7	38.168	-122.960
ZA6	38.175	-130.156
面積	1010.652968	
座標	505.3262840	
座標	505.32	nf

その他		
測点名	X 座標	Y 座標
ZA1	110.908	-204.432
ZA2	78.317	-157.498
ZA3	68.119	-151.793
ZA4	94.540	-148.806
ZA5	42.078	-144.221
MO9	38.456	-136.799
ZA6	35.135	-130.156
ZA7	38.168	-122.960
ZA8	47.495	-119.375
ZA9	55.573	-115.678
ZA10	61.364	-112.410
ZA11	96.816	-103.457
ZA12	96.232	-98.430
ZA13	96.707	-96.557
ZA14	98.499	-94.544
ZA15	99.805	-91.372
ZA16	98.419	-83.933
ZA17	97.894	-73.692
ZA18	96.882	-71.101
ZA19	93.920	-64.989
ZA20	93.820	-63.786
K408	75.242	-69.443
K307	24.920	-81.879
K306	23.721	-102.501
K305	24.476	-112.417
K304	27.442	-127.987
K303	38.774	-134.767
K302	41.410	-170.214
K301	42.997	-173.688
K323	50.054	-189.254
K322	52.096	-193.237
K321	62.833	-208.059
K320	82.576	-223.815
面積	13363.720996	
座標	6681.8649880	
座標	6681.86	nf

年度	平成 19 年度
工事名	前平墓地拡張造成計画委託業務
工事場所	美濃加茂市蜂屋町中蜂屋地内
図面	丈量図 (切土 盛土)
縮尺	1/500
設計者	